

BOURALKA

J. Kelnar

Klarinet E

1. 2.

Trio

2 3

3

3

1. 2. Fine

D.S. al Fine

1x

BOURALKA

J. Kelnar

Klarinet 1B

First staff of music, starting with a treble clef and a 2/4 time signature. It begins with a repeat sign and contains several measures of music with eighth and sixteenth notes.

Second staff of music, continuing the melody with various note values and rests.

Third staff of music, featuring first and second endings marked '1.' and '2.' with repeat signs.

Fourth staff of music, continuing the melodic line with slurs and accents.

Fifth staff of music, showing a continuation of the melodic pattern.

Sixth staff of music, ending with a double bar line and repeat sign.

Trio

Seventh staff of music, marked 'Trio' and starting with a new key signature (one flat). It begins with a repeat sign and a measure rest.

Eighth staff of music, featuring a triplet of eighth notes marked '3'.

Ninth staff of music, also featuring a triplet of eighth notes marked '3'.

Tenth staff of music, continuing the triplet pattern marked '3'.

Eleventh staff of music, featuring first and second endings marked '1.' and '2.' with a 'Fine' instruction.

Twelfth staff of music, concluding the piece with a final melodic phrase.

D.S. al Fine

BOURALKA

J. Kelnar

Křidlovka 1

3

3

1. 2.

13

♩ 1. Ten., 2. Křídl., 3. Tutti

Trio

4

4

4

1. 2.

Křídl. Fine

Tutti

D.S. al Fine

BOURALKA

J. Kelnar

Křidlovka 2

3

The first three staves of the musical score. The first two staves are in treble clef with a 2/4 time signature. The third staff contains first and second endings, with the first ending leading to a double bar line and the second ending leading to a repeat sign. A measure number '13' is placed above the third staff.

Trio  1. Ten., 2. Křidl., 3. Tutti

The Trio section begins with a treble clef and a key signature of one flat. It features three staves of music. The first staff includes a first ending and a second ending marked 'Fine'. The second and third staves contain musical notation with measure numbers '4' and '4' respectively. The section concludes with the instruction 'Tutti' above the final staff.

D.S. al Fine

BOURALKA

J. Kelnar

Tenor

Musical score for Tenor part, measures 1-13. The score is written in 2/4 time and features a melodic line with various ornaments and phrasing. Measure 13 includes a first ending (1.) and a second ending (2.).

Musical score for Trio part, measures 1-13. The score is written in 2/4 time and features a melodic line with various ornaments and phrasing. Measure 13 includes a first ending (1.) and a second ending (2.).

1. Ten., 2. Křidl., 3. Tutti

4

4

4

1. 2.

Fine

Tutti

D.S. al Fine

BOURALKA

J. Kelnar

Ten.

Baryton

Musical score for Tenor and Baritone parts. The score consists of four staves. The first staff begins with a treble clef and a 2/4 time signature. The music features various note values, including eighth and sixteenth notes, and rests. There are first and second endings marked with '1.' and '2.' in the third staff. A measure rest of 13 measures is indicated in the fourth staff.

Musical score for Trio part. The score consists of seven staves. The first staff begins with a treble clef, a key signature of one flat, and a 2/4 time signature. The music includes first and second endings marked with '1.' and '2.' in the sixth staff. The word 'Fine' is written above the second ending. The word 'Tutti' is written above the final staff. The instruction 'D.S. al Fine' is written below the final staff.

BOURALKA

The first section of the music consists of five staves. The first staff begins with a treble clef and a 2/4 time signature. The music is written in a single melodic line with various rhythmic values including eighth and sixteenth notes, and rests. The piece concludes with a double bar line and repeat dots.

TRIO

The Trio section consists of six staves of music. The first staff begins with a treble clef and a key signature of one flat (B-flat). The music continues with a single melodic line. The fourth staff includes first and second endings, with the second ending marked "FINE". The fifth staff concludes with the instruction "D.S." (Da Capo) above the final notes.

The first section of the music consists of five staves of notation in 2/4 time. The first staff begins with a double bar line and a repeat sign. The melody is primarily composed of eighth and sixteenth notes, with some rests. The key signature is one flat (Bb). The section concludes with a double bar line and repeat sign.

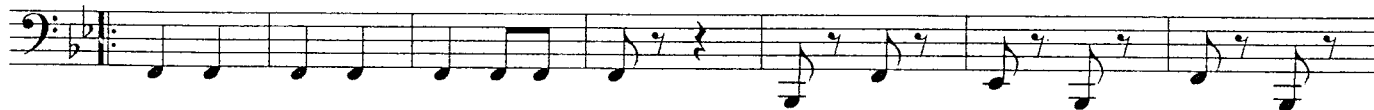
TRIO

The TRIO section consists of five staves of notation in 2/4 time. The key signature changes to two flats (Bb and Eb). The melody continues with eighth and sixteenth notes. The section concludes with a double bar line and repeat sign. Above the final measure of the fourth staff, there are two first endings: "1." and "2. FINE". Above the final measure of the fifth staff, the instruction "D.S." is written.

The first section of the music consists of five staves. The first staff begins with a 2/4 time signature and a key signature of one flat. It features a series of eighth and sixteenth notes, with some rests. The second staff continues the melodic line with similar rhythmic patterns. The third staff shows a change in the melodic contour, with some longer note values. The fourth and fifth staves complete the section with more rhythmic activity and a final cadence.

TRIO

The TRIO section consists of five staves of music. The first staff begins with a key signature change to two flats. The music continues with a similar rhythmic pattern of eighth and sixteenth notes. The second, third, and fourth staves maintain this rhythmic structure. The fifth staff concludes the section with a first ending (marked '1.') and a second ending (marked '2. FINE'). The final staff of the page begins with the instruction 'D.S.' (Da Capo) and continues the musical line.



TRIO



BOURALKA

J. Kelnar

Bici

The first section of the score consists of seven staves of music in bass clef, 2/4 time. It begins with a repeat sign. The melody is primarily eighth-note based. The first ending (1.) concludes with a fermata and the instruction "Bum!". The second ending (2.) also concludes with a fermata and the instruction "Bum!".

The Trio section begins with a section symbol (a circled 'S') and the word "Trio" written above the first staff. It consists of ten staves of music in bass clef, 2/4 time. The music features a steady eighth-note accompaniment. The first ending (1.) concludes with a fermata and the instruction "Fine". The second ending (2.) continues the melody. The section ends with a fermata.

D.S. al Fine

Milan Zachodil 2003